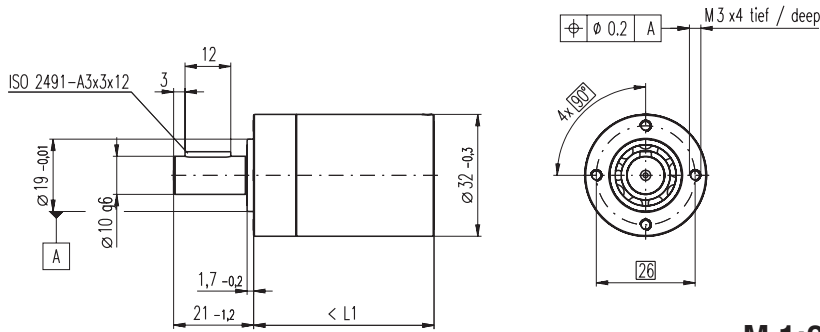


# Planetary Gearhead GP 32 HP $\varnothing 32$ mm, 8.0 Nm

**NEW**



**M 1:2**

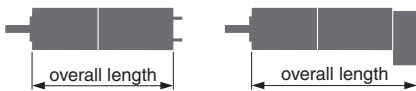
## Technical Data

Planetary Gearhead	straight teeth
Output shaft	stainless steel
Bearing at output	ball bearing
Radial play, 10 mm from flange	max. 0.14 mm
Axial play	max. 0.4 mm
Max. radial load, 10 mm from flange	200 N
Max. permissible axial load	120 N
Max. permissible force for press fits	120 N
Sense of rotation, drive to output	=
Recommended input speed	< 8000 rpm
Recommended temperature range	-20 ... +100°C
Extended area as option	-35 ... +100°C

- Stock program
- Standard program
- Special program (on request)

## Order Number

	320247	326663	326664	326668	324942	324948	324953
<b>Gearhead Data (provisional)</b>							
1 Reduction	14 : 1	33 : 1	51 : 1	111:1	246 : 1	492 : 1	762 : 1
2 Reduction absolute	676/49	529/16	17576/343	13824/125	421824/1715	86112/175	19044/25
3 Max. motor shaft diameter mm	5	3	6	4	4	3	3
<b>Order Number</b>	<b>326659</b>		<b>326665</b>	<b>326669</b>	<b>324944</b>	<b>324949</b>	<b>324954</b>
1 Reduction	18 : 1		66 : 1	123 : 1	295 : 1	531 : 1	913 : 1
2 Reduction absolute	624/35		16224/245	6877/56	101062/343	331776/625	36501/40
3 Max. motor shaft diameter mm	4		4	3	3	4	3
<b>Order Number</b>	<b>326660</b>		<b>326666</b>	<b>326670</b>	<b>324945</b>	<b>324950</b>	<b>324955</b>
1 Reduction	21 : 1		79 : 1	132 : 1	318 : 1	589 : 1	1093 : 1
2 Reduction absolute	299/14		3887/49	3312/25	389376/1225	20631/35	279841/256
3 Max. motor shaft diameter mm	3		3	3	4	3	3
<b>Order Number</b>	<b>326661</b>		<b>326667</b>	<b>326671</b>	<b>324946</b>	<b>324951</b>	
1 Reduction	23 : 1		86 : 1	159 : 1	411 : 1	636 : 1	
2 Reduction absolute	576/25		14976/175	1587/10	359424/875	79488/125	
3 Max. motor shaft diameter mm	4		4	3	4	3	
<b>Order Number</b>	<b>326662</b>		<b>320297</b>	<b>326672</b>	<b>324947</b>	<b>324952</b>	
1 Reduction	28 : 1		103 : 1	190 : 1	456 : 1	706 : 1	
2 Reduction absolute	138/5		3588/35	12167/64	89401/196	158171/224	
3 Max. motor shaft diameter mm	3		3	3	3	3	
4 Number of stages	2	2	3	3	4	4	4
5 Max. continuous torque Nm	8	8	8	8	8	8	8
6 Intermittently permissible torque at gear output Nm	12	12	12	12	12	12	12
7 Max. efficiency %	75	75	70	70	60	60	60
8 Weight g	178	178	213	213	249	249	249
9 Average backlash no load °	1.6	1.6	2.0	2.0	2.0	2.0	2.0
10 Mass inertia gcm <sup>2</sup>	0.8	0.8	0.7	0.7	0.7	0.7	0.7
11 Gearhead length L1 mm	47.4	47.4	54.1	54.1	60.8	60.8	60.8



+ Motor		+ Tacho / Brake		Overall length [mm] = Motor length + gearhead length + (tacho / brake) + assembly parts						
Page	Page	Page	Page							
RE 35, 90 W 81				118.5	118.5	125.2	125.2	131.9	131.9	131.9
RE 35, 90 W 81	MR	251		129.8	129.8	136.5	136.5	143.2	143.2	143.2
RE 35, 90 W 81	HED_ 5540	254/256		139.4	139.4	146.1	146.1	152.8	152.8	152.8
RE 35, 90 W 81	DCT 22	263		136.5	136.5	143.2	143.2	149.9	149.9	149.9
RE 35, 90 W 81	AB 28	300		154.5	154.5	161.2	161.2	167.9	167.9	167.9
RE 35, 90 W 81	HEDS 5540 / AB 28	254/300		171.6	171.6	178.3	178.3	185.0	185.0	185.0
EC-power 30, 100 W 184				94.5	94.5	101.2	101.2	107.9	107.9	107.9
EC-power 30, 100 W 184	MR	250		106.7	106.7	113.4	113.4	120.1	120.1	120.1
EC-power 30, 100 W 184	HEDL 5540	258		115.1	115.1	121.8	121.8	128.5	128.5	128.5
EC-power 30, 100 W 184	AB 20	298		126.6	126.6	133.3	133.3	140.0	140.0	140.0
EC-power 30, 100 W 184	HEDL 5540/AB 20	258/298		147.2	147.2	153.9	153.9	160.6	160.6	160.6
EC-power 30, 200 W 185				111.5	111.5	118.2	118.2	124.9	124.9	124.9
EC-power 30, 200 W 185	MR	250		123.7	123.7	130.4	130.4	137.1	137.1	137.1
EC-power 30, 200 W 185	HEDL 5540	258		132.1	132.1	138.8	138.8	145.5	145.5	145.5
EC-power 30, 200 W 185	AB 20	298		143.6	143.6	150.3	150.3	157.0	157.0	157.0
EC-power 30, 200 W 185	HEDL 5540/AB 20	258/298		164.2	164.2	170.9	170.9	177.6	177.6	177.6
MCD EPOS, 60 W 295				167.5	167.5	174.2	174.2	180.9	180.9	180.9
MCD EPOS P, 60 W 295				167.5	167.5	174.2	174.2	180.9	180.9	180.9